

MICRO SWITCH
 FREEPORT ILLINOIS U.S.A.
 A DIVISION OF HONEYWELL
 FED. MFG CODE 91929

SWITCH - TOGGLE
ABOVE PANEL MOUNT

CATALOG LISTING
2TP216 SERIES
CHART 1

THIS DRAWING COVERS A PROPRIETARY ITEM AND IS THE PROPERTY OF MICRO SWITCH, A DIVISION OF HONEYWELL. THIS DRAWING IS NOT TO BE COPIED OR USED WITHOUT THE APPROVAL OF MICRO SWITCH.

2TP216 SERIES

CATALOG LISTING
2TP216 SERIES CHART 1

PAGE 1 OF 1

REPLACES CO-78497

ISSUE **M**
3

REVISIONS
 A CO-94413
 JUL 8 OCT 99
 B CO-95303
 C S L
 15 NOV 99

CHECK

CHECK

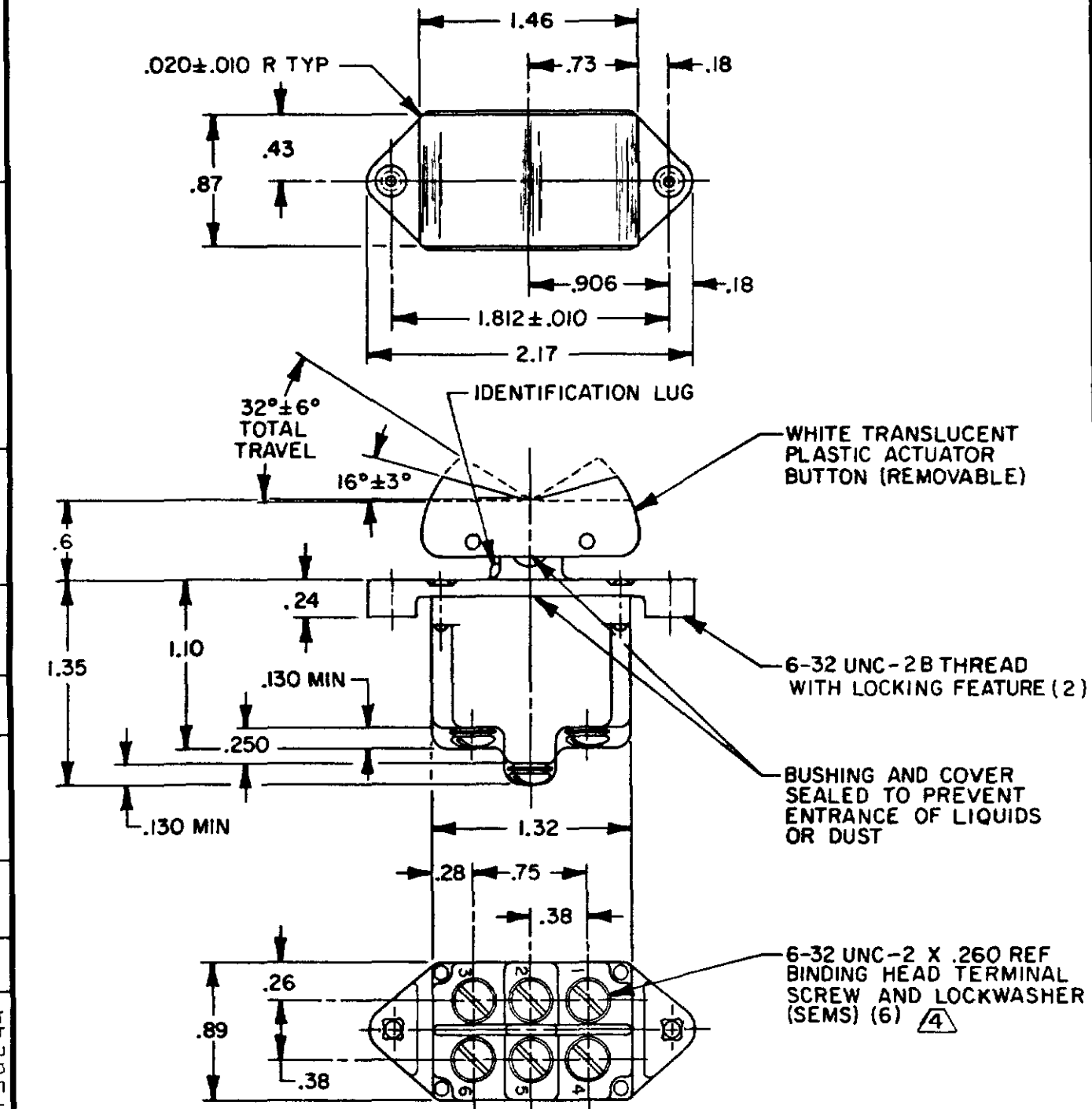
CHECK

CHECK

CHECK

CHECK

FORMTEK



CATALOG LISTING	CIRCUIT MADE WITH BUTTON DEPRESSED ON			ELECTRICAL DATA
	LUG SIDE (1-2, 4-5)	CENTER (1-2, 4-5)	OPPOSITE LUG (2-3, 5-6)	
2TP216-1	ON	OFF	ON	L191 15A 125, 250, 277 VAC 1/2HP 125 VAC 1HP 250, 277 VAC 5A 125 VAC "L"
(B)	OFF	NONE	ON	
(B)	ON	NONE	ON	
2TP216-21	NONE	OFF	ON	
(B)	NONE	ON	ON	L192 10A 125, 250, 277 VAC 1/4HP 125 VAC, 1/2HP 250, 277 VAC 3A 125 VAC "L"
2TP216-4	MOM OFF	NONE	ON	
2TP216-5	MOM ON	OFF	ON	
2TP216-6	MOM ON	NONE	OFF	
2TP216-7	MOM ON	OFF	MOM ON	
2TP216-8	MOM ON	NONE	ON	
2TP216-51	NONE	ON	MOM ON	
2TP216-61	MOM ON	OFF	NONE	



THIRD ANGLE PROJECTION

SCALE FULL

DO NOT SCALE PRINT

TOLERANCES
 APPLY TO DESIGN UNITS. CONVERSIONS ARE ONLY FOR REFERENCE. UNLESS NOTED, TOLERANCES ARE:

NO PLACES	ONE PLACE	TOL.	ONE PLACE	TOL.
		1/64		0.0705
		0.0010		0.0015
		0.0005		0.0008

DESIGN UNITS METRIC US CUSTOMARY

WEIGHT .13 LB EST

- NOTES
- 1 - MICRO SWITCH CATALOG LISTING MARKED ON SIDE OF SWITCH
 - 2 - APPLIES ONLY TO "ON" AND "MOMENTARY ON" POSITIONS
 - 3 - THESE SWITCHES WILL WITHSTAND TEMPERATURE OF 160°F
 - 4 - SCREWS FURNISHED UNASSEMBLED